



Illuminé™

teeth whitening system

wear it with pride

For better dentistry

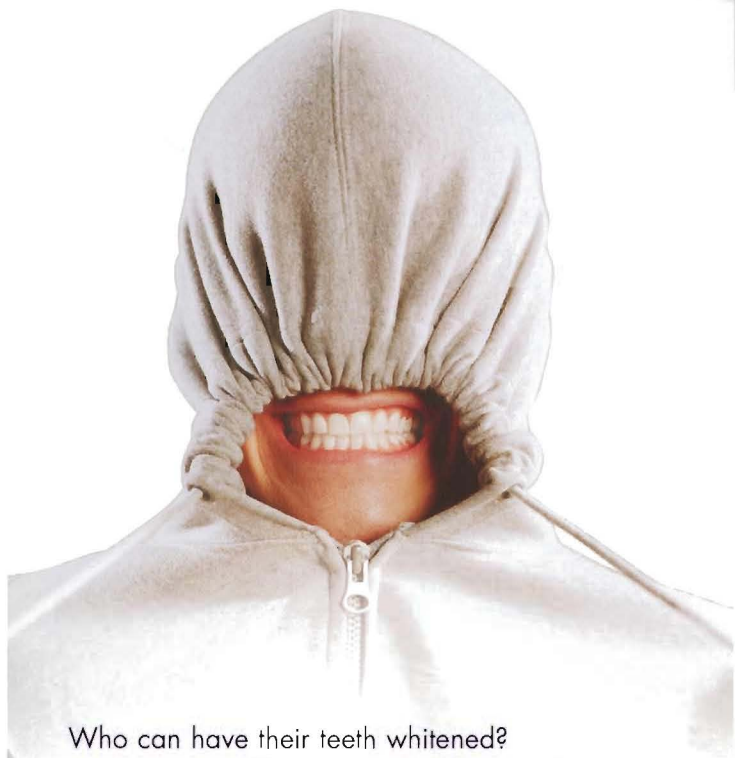
DENTSPLY



Wear your smile
with pride
whiten your teeth
with **Illuminé™**!

Studies have shown that our appearance plays a major role in the success of our personal and professional life. Like your hair and clothes, whiter teeth can completely change your appearance and boost your confidence.

Read on to find out more about **Illuminé™**.



Who can have their teeth whitened?

Almost anyone. **Illuminé™** works well on teeth that are severely stained from food, coffee, red wine, tobacco and other stains. We are all made differently however, so treatment will vary from one person to another, so check with your dentist for their advice.

How does it work?

Illuminé™ is made of Hydrogen Peroxide, which breaks down during the process. As oxygen enters the enamel and dentine it bleaches the coloured substances that cause the staining.

What's the difference between the 'In-Office' and 'At-Home' **Illuminé™**?

'In-Office' is applied by your dentist and gives a quick result. The **'At-Home'** system is applied by yourself, in the comfort of your own home. You can whiten your teeth while watching TV or doing the ironing.

Does it hurt?

No. The procedure is usually painless although a few people may experience sensitive teeth afterwards. Try brushing with a toothpaste that specialises in sensitive teeth before and after having your teeth whitened.

What should I expect when I go to get my teeth whitened?

At the first appointment, the dentist will use a putty-like material to take an 'impression' of your teeth, to make a tray that will fit your mouth.



At the next appointment, the dentist will check that this tray fits correctly and may give your teeth a pre-bleach polish. If you are having the In-Office system, the dentist will place **Illuminé™** in the tray and place it in your mouth.

If you are having the At-Home system, the dentist will show you how to put **Illuminé™** in the tray so you know what to do when you get home.

How long will it take to work?

The In-Office only takes about 60 minutes. If you have just the at Home, by wearing the tray for a few hours a day, it should take about 2 weeks.

How long will it last?

Your teeth will remain whiter for up to 2 years.

However, this depends on how well you maintain your new, white smile. Speak to your dentist or hygienist for advice on how to keep your smile whiter, for longer.

An **Illuminé™** white smile is a great idea for...

- Weddings
- Interviews
- Cosmetic makeovers
- Treating a friend, family member or yourself!

DENTAL PRACTITIONER DETAILS

Empty box for dental practitioner details.

www.dentsply.co.uk

For better dentistry

DENTSPLY