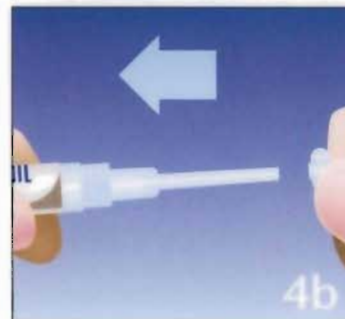
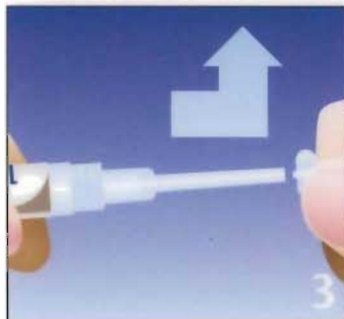
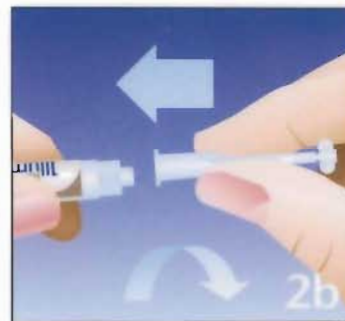


# home Illuminé™

Tooth Whitening Gels  
for Home Treatment

## Professional Bleaching Step by Step





K150079-02

DENSPLY

DENTSPLY



# home Illuminé™

Tooth Whitening Gels for Home Treatment

Patient Information

Patienteninformation

Notice d'information du patient

Istruzioni d'uso per il paziente

Información para el paciente

Patientinformation

Patiëntenbijsluiter

Patientinformation

Patient

# home Illuminé™

## Tooth Whitening Gels for Home Treatment

Illuminé™ home tooth whitening gels may be used alone or following treatment with an in-office tooth whitener.

Illuminé home tooth whitening gels contain the active ingredient of carbamide peroxide, which has shown to be most effective for the treatment of tooth discolourations at home.

Illuminé home 10% tooth whitening gel contains 10% carbamide peroxide, releasing H<sub>2</sub>O<sub>2</sub> (the active ingredient) in a concentration of about 3.6%.

Illuminé home 15% tooth whitening gel contains 15% carbamide peroxide, releasing H<sub>2</sub>O<sub>2</sub> (the active ingredient) in a concentration of about 5.4%, and in addition sodium fluoride.

### COMPOSITION

#### Illuminé home 10%:

10% carbamide peroxide  
Glycerine  
Carboxypolymethylene  
Sodium hydroxide  
Water  
Artificial mint flavour<sup>1</sup>

#### Illuminé home 15%:

15% carbamide peroxide  
Glycerine  
Carboxypolymethylene  
Sodium hydroxide  
Water  
Artificial mint flavour<sup>1</sup>  
Sodium fluoride

Both Illuminé home tooth whitening gels have pH values of approximately 6.0.

### INDICATIONS

- Tooth discolouration caused by:
  - Staining from food, drinks and tobacco with penetration into the tooth substance
  - Age-dependent degenerative changes
  - Tetracycline (first and second grades) or minocycline medication
  - Fluorosis, especially brown pigmentation
  - Pulp necrosis and/or endodontic treatment.
- Masking of enamel mottling.
- Genetically determined dark teeth.
- Whitening of discoloured teeth prior to restorative and/or prosthodontic measures, e.g. veneering.

The best results are with patients whose teeth are discoloured to yellow, orange or light brown.

### CONTRAINDICATIONS

- Use during pregnancy or lactation.
- Known allergy to ingredients of the products.
- Extrinsic stains which can easily be removed by professional tooth cleaning and which can be prevented by thorough oral hygiene.
- Use in heavy smokers unless they refrain from smoking while wearing the tray.

### WARNINGS

- Illuminé home contains carbamide peroxide which may be irritating. Avoid contact with oral tissues, eyes and skin. If accidental contact occurs, flush affected area with generous amounts of water. In case of contact with eyes, rinse immediately with plenty of water and seek medical advice.
- Care should be taken to assure that the reason for the discolouration is understood, in order to avoid masking of pathological conditions.
- Keep out of reach of children.

### PRECAUTIONS

Sensitivity of the teeth and gingival tissues may occur during the treatment. For teeth sensitivity, try using slightly less Illuminé home tooth gel or shorten the length of time for each exposure.

Particular care should be given during insertion of the tray to carefully remove excess material as well as misapplied material from mucosal tissues and to avoid contact to skin and eyes.

If discomfort or teeth ache is experienced for an extended period of time, please consult your dentist for the next appropriate steps.

### INTERACTIONS WITH DENTAL MATERIALS

Existing tooth coloured restorations may not match the lighter shade of teeth after the treatment and may need to be replaced.

Illuminé home should be used before the placement of composites, veneers or crowns, in order to maintain a close match of tooth colour.

Some old restorations (e.g. amalgams) may leave dark stains in the tray. This is normal and harmless.

### ADVERSE REACTIONS

Sensitivity of teeth and irritation of the oral mucosa may be experienced from the use of carbamide peroxide-based products.

Irritation of the oral mucosa may occur. Sore throat or nausea may be experienced if excessive gel is swallowed. Remove excess gel after the insertion of the tray with finger or toothbrush.

If sensitivity of teeth or irritation of the oral mucosa continue although all precautions have been met, discontinue use of the product and consult your dentist as soon as possible.

### WHITENING APPLICATION GUIDE

- Brush and floss teeth prior to wearing the tray.
- Prior to first use of an Illuminé home syringe, replace cap by one of the applicators provided.

3. Open applicator by breaking off tip (retain tip to close applicator after use of syringe).
4. Following your dentist's instructions, place small amounts of gel towards the facial side of each tooth to be treated. DO NOT overfill the tray.  
Close applicator on syringe and retain syringe for next treatment until empty. Each syringe contains approx. 3 to 5 applications.
5. Insert the gel tray in the mouth over the teeth. Wipe the excess material from the gum or tissue with your finger or toothbrush.
6. Wear the tray with gel throughout the night or as directed by your dentist (a minimum of 2 hours suggested).
7. Do not eat or drink anything or smoke while wearing the tray.
8. After treatment, remove tray and rinse your teeth. Brush away any remaining gel.
9. Clean the gel tray with warm water and a toothbrush. Dry thoroughly and store in the tray holder.

### TREATMENT PERIOD

The usual treatment period is one to two weeks and ends when the desired tooth shade is attained.

At your recall appointment with your dentist, the treatment results will be assessed. In some cases, an extended treatment time of from six weeks to six months may be required to attain the desired effect.

Usually, the achieved results will last up to two years.

### STORAGE

For long-term storage prior to use, refrigerate (2 - 8 °C) the gel to maintain shelf life and assure the maximum effectiveness of the product.

Keep the Illuminé home kit away from heat or direct sunlight at all times.

Inadequate storage conditions will shorten the shelf life and may lead to a malfunction of the product.

### BATCH NUMBER AND EXPIRY DATE

The batch number should be quoted in all correspondence which requires identification of the product.

Do not use after expiry date.

If you have any questions, please contact your dentist.



**Manufacturer:**  
DENTSPLY DeTrey GmbH  
De-Trey-Str. 1  
78467 Konstanz  
GERMANY  
Phone +49 (0) 75 31 5 83-0

**Distributor:**  
DENTSPLY Limited  
Hamm Moor Lane  
Addlestone, Weybridge  
Surrey KT15 2SE  
Phone (0 19 32) 85 34 22